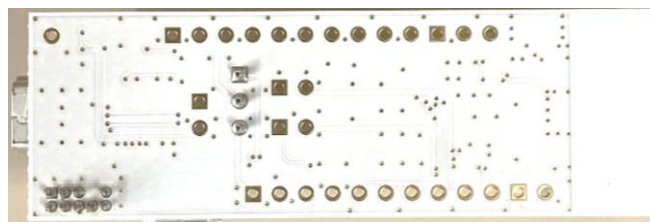
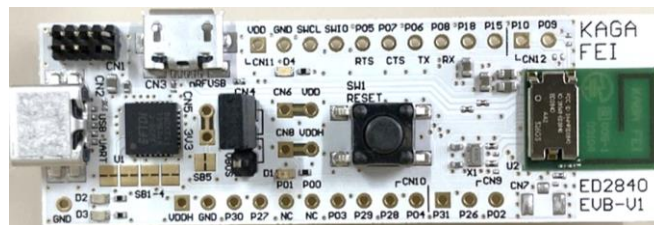


EVALUATION BOARD MANUAL ED2840AA2-EVB

EVALUATION KIT MANUAL ED2840AA2-EVK

for ED2840 Series Bluetooth[®] low energy Module

High performance antenna

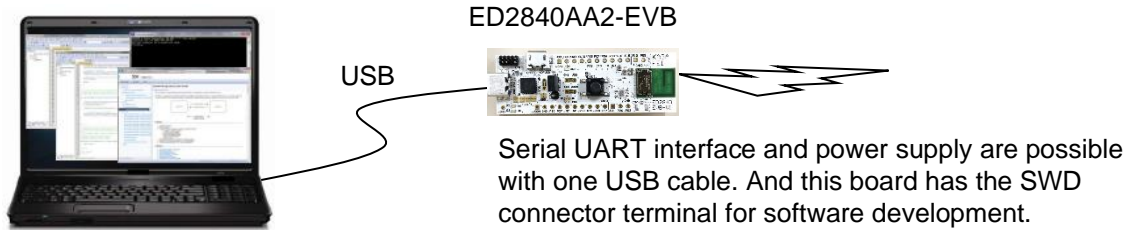


Contents

1. Introduction	3
2. Mounted module.....	3
3. Content.....	4
4. Evaluation board circuit schematic.....	4
5. Evaluation board layout	5
6. Silkscreen Printing	5
7. Pin Descriptions	6
8. How to use	6
9. For software development	7
10. MEMO	8
11. Important notes	10

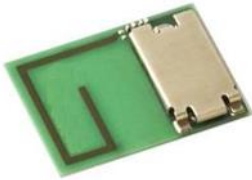
1. Introduction

This evaluation board is applicable for KAGA FEI's **Bluetooth® low energy** module, ED2840 Series.



2. Mounted module

ED2840 (9.6mm x 12.9mm x 1.3mm_MAX)
High performance antenna



Nordic nRF52840 / ARM® Cortex™-M4F 32 bit processor and 1MB Flash & 256kB RAM
38-pin Land Grid Array / 19GPIOs / SWD /USB2.0

- Basic Module –

KAGA FEI writes S140 SoftDevice to this product (ED2840AA2).
The user can develop unique application for the module.

3. Content

1	ED2840AA2-EVB Evaluation Board+ USB cable for Evaluation Board	1 pc
2	J-Link Lite (ED2840AA2-EVK Only) + USB cable for Evaluation Board *1	1 set

1. ED2840AA2-EVB



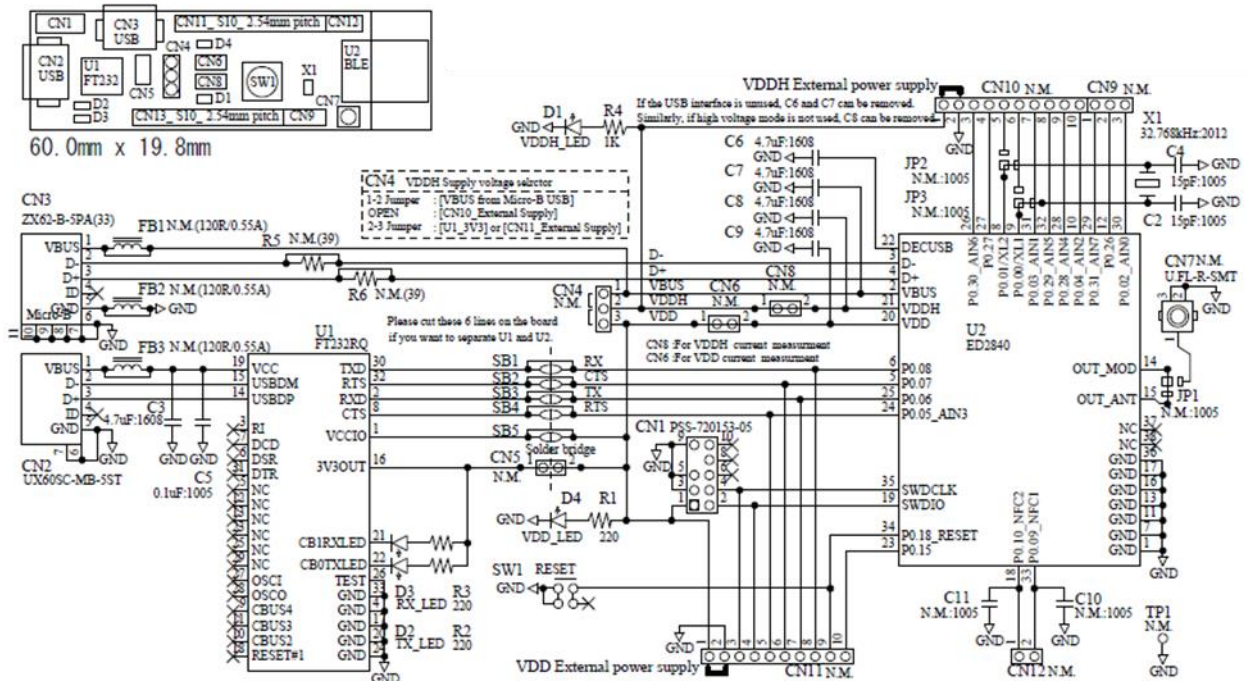
2. ED2840AA2-EVK



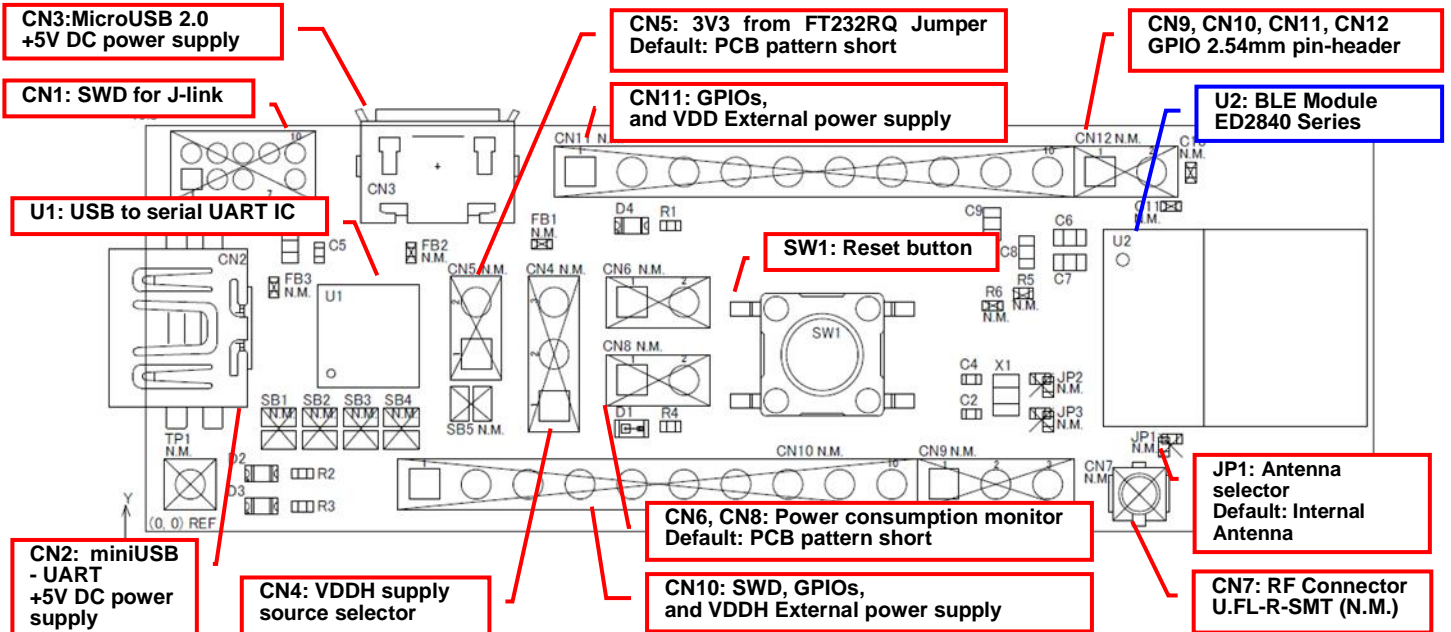
*1 Notes on using J-Link Lite

J-Link Lite is only delivered and supported as part of an evaluation kit, which includes an evaluation board. It may only be used with the evaluation board it came with, and not to be used for commercial product development.

4. Evaluation board circuit schematic

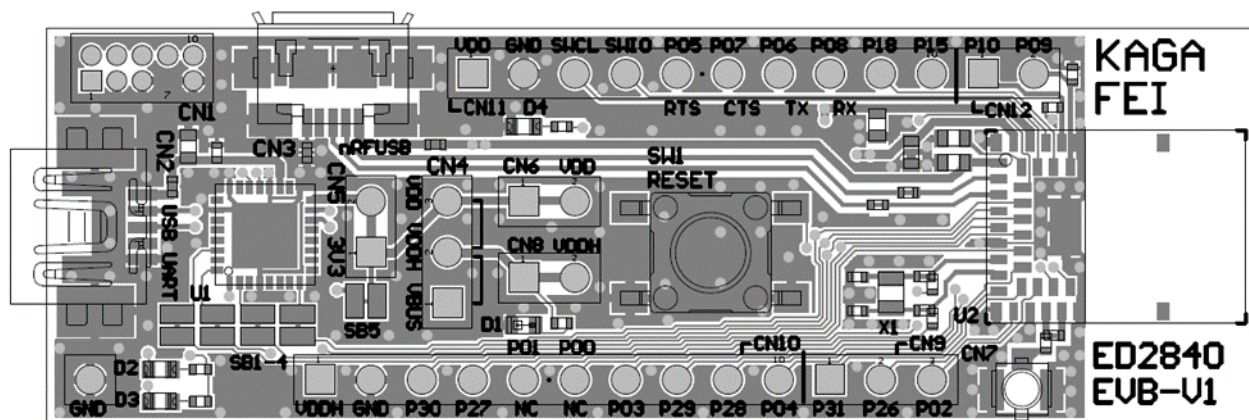


5. Evaluation board layout



- 1) The **CN9 - CN12** headers are on a **2.54mm pitch grid**.
- 2) Many parts are not mounted. Please refer to (N.M.) in the circuit schematic.
- 3) **D1 (LED):** VDDH Indicator, **D4(LED):** VDD Indicator
- 4) **D2 (LED):** UART TX Indicator, **D3 (LED):** UART RX Indicator
- 5) Please set a short **jumper on 2-3 pins of CN4**. Thereby, with only one miniUSB(for CN2) cable, the module can be operated most easily as normal voltage mode.

6. Silkscreen Printing



Two-layer board : Line/Space : 100/100(um)

7. Pin Descriptions

Pin No.	CN1 (1.27pitch)	CN9 (2.54pitch)	CN10 (2.54pitch)
1	VDD	P0.31_AIN7	VDDH
2	SWDIO	P0.26	GND
3	GND	P0.02_AIN0	P0.30_AIN6
4	SWDCLK	-	P0.27
5	GND	-	P0.01/XL2
6	NC	-	P0.00/XL1
7	(No pin)	-	P0.03_AIN1
8	NC	-	P0.29_AIN5
9	GND	-	P0.28_AIN4
10	NC	-	P0.04_AIN2

Pin No.	CN11 (2.54pitch)	CN12 (2.54pitch)
1	VDD	P0.10_NFC2
2	GND	P0.09_NFC1
3	SWDCLK	-
4	SWDIO	-
5	P0.05	-
6	P0.07	-
7	P0.06	-
8	P0.08	-
9	P0.18_RESET	-
10	P0.15	-

8. How to use

It is very easy just to tie this board to the PC with a USB cable. It is not necessary to change the setting of the board. The power supply of the module supplies by default 3.3V from 3V3OUT of FT232RQ.

9. For software development

Nordic-DK and Use case



Nordic nRF Connect etc.



NORDIC DK

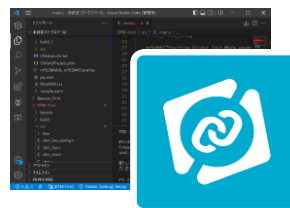
SWD

USB

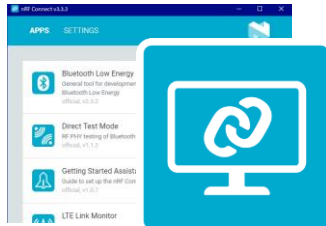
ED2840AA2-EVB



- SEGGER Embedded Studio
- Visual Studio Code



- nRF Connect for Desktop



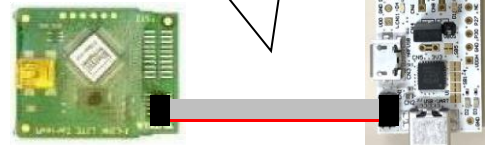
etc.

SWD : Serial Wire Debug
It can be use J-Link Lite CortexM-9
JTAG/SWD Emulator that attached
with ED2840AA2-EVK



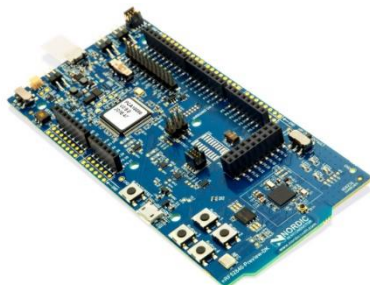
CN1 supports the connection of the 10 pin 1.27mm flat cable.

Please be careful about the directions.



- Nordic-nRF52840 DK

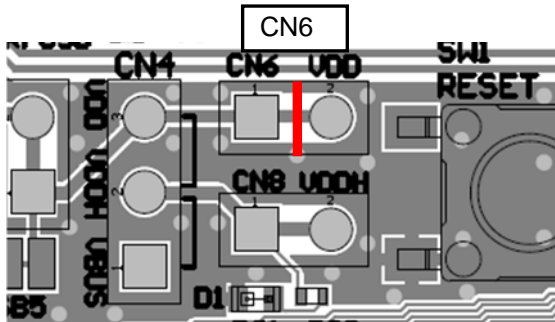
<https://www.nordicsemi.com/Products/Development-hardware/nRF52840-DK>



10.MEMO

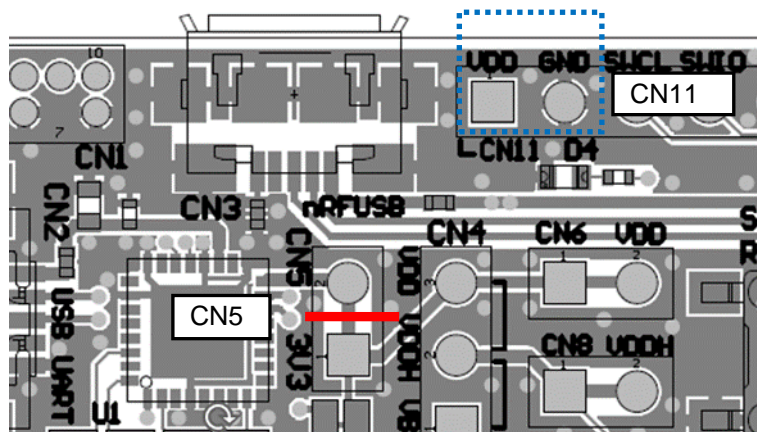
1) Current measurement

To measure VDD current, please cut the shorting 1pin and 2 pin of CN6. And connect an ampere-meter between the pins of connector CN6 to monitor the current directly. Similarly, VDDH is CN8.



2) About VDD power supply

When you use external power supply, please supply power from 1pin and 2pin of CN11. On this case, you cut short circuit 1pin and 2pin of CN5 and should separate 3V3OUT of FT232RQ.



3) USB to serial UART interface

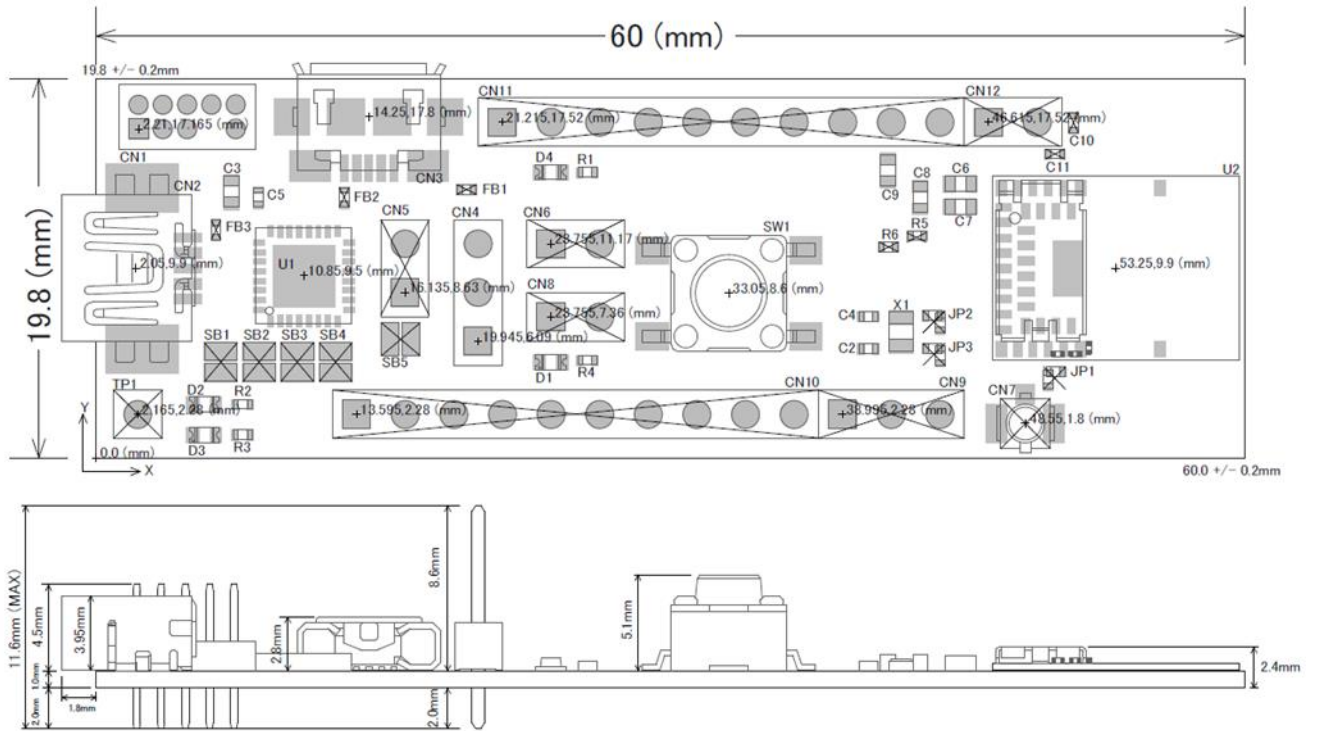
It needs to install driver of FT232RQ to use USB for UART interface. The drivers are available on FTDI website.

<http://www.ftdichip.com/Drivers/D2XX.htm>

In addition, by the application development, please assign GPIO as follows.

GPIO	UART
P0.05	RTS
P0.06	TX
P0.07	CTS
P0.08	RX

4) Size and Coordinate information



11. Important notes

32kHz Clock

This module does not installed 32.768kHz crystal. In case of operating without external crystal, please modify `sdk_config.h` in order to enable internal 32.768kHz RC oscillator (32k RCOSC).

The content may change depending on the SDK you use.

```
--sdk_config.h-- (In case of SDK17.1)
// <o> CLOCK_CONFIG_LF_SRC - LF Clock Source
// <0=> RC
// <1=> XTAL
// <2=> Synth
// <131073=> External Low Swing
// <196609=> External Full Swing
#ifndef CLOCK_CONFIG_LF_SRC
#define CLOCK_CONFIG_LF_SRC 0
#endif
// </h>
//=====
// <h> Clock - SoftDevice clock configuration
//=====
// <o> NRF_SDH_CLOCK_LF_SRC - SoftDevice clock source.
// <0=> NRF_CLOCK_LF_SRC_RC
// <1=> NRF_CLOCK_LF_SRC_XTAL
// <2=> NRF_CLOCK_LF_SRC_SYNTH
#ifndef NRF_SDH_CLOCK_LF_SRC
#define NRF_SDH_CLOCK_LF_SRC 0
#endif
// <o> NRF_SDH_CLOCK_LF_RC_CTIV - SoftDevice calibration timer interval.
#ifndef NRF_SDH_CLOCK_LF_RC_CTIV
#define NRF_SDH_CLOCK_LF_RC_CTIV 16
#endif
// <o> NRF_SDH_CLOCK_LF_RC_TEMP_CTIV - SoftDevice calibration timer interval under constant temperature.
// <i> How often (in number of calibration intervals) the RC oscillator shall be calibrated
// <i> if the temperature has not changed.
#ifndef NRF_SDH_CLOCK_LF_RC_TEMP_CTIV
#define NRF_SDH_CLOCK_LF_RC_TEMP_CTIV 2
#endif
// <o> NRF_SDH_CLOCK_LF_ACCURACY - External clock accuracy used in the LL to compute timing.
// <0=> NRF_CLOCK_LF_ACCURACY_250_PPM
// <1=> NRF_CLOCK_LF_ACCURACY_500_PPM
// <2=> NRF_CLOCK_LF_ACCURACY_150_PPM
// <3=> NRF_CLOCK_LF_ACCURACY_100_PPM
// <4=> NRF_CLOCK_LF_ACCURACY_75_PPM
// <5=> NRF_CLOCK_LF_ACCURACY_50_PPM
// <6=> NRF_CLOCK_LF_ACCURACY_30_PPM
// <7=> NRF_CLOCK_LF_ACCURACY_20_PPM
// <8=> NRF_CLOCK_LF_ACCURACY_10_PPM
// <9=> NRF_CLOCK_LF_ACCURACY_5_PPM
// <10=> NRF_CLOCK_LF_ACCURACY_2_PPM
// <11=> NRF_CLOCK_LF_ACCURACY_1_PPM
#ifndef NRF_SDH_CLOCK_LF_ACCURACY
#define NRF_SDH_CLOCK_LF_ACCURACY 1
#endif
```

Note that when you choose to use the RC oscillator, it will add around 2uA average current consumption compared to a 20ppm external crystal.

ANT specification requires +/-50ppm accuracy for 32.768kHz clock. There is a possibility that the internal RC oscillator does not meet to the specification.