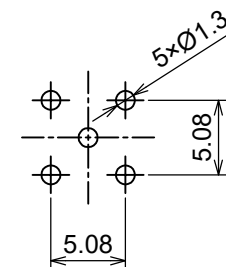
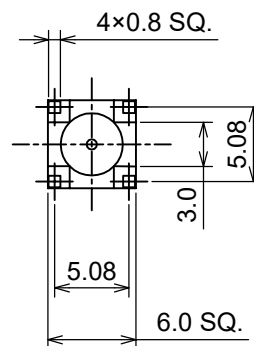
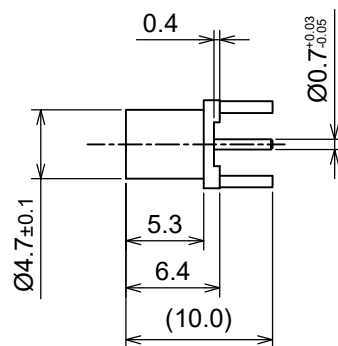


RoHS10 Support



RECOMMENDED PCB MOUNTING HOLE

○規格 (Standard)
CECC-22220

○仕様 (Specification)

- 特性インピーダンス (Impedance) : 75 Ω
- 定格周波数 (Working Frequency Range) : DC~3GHz max
- 電圧定在波比 (VSWR) : ≤ 1.25
- 挿入損失 (Insertion Loss) : N/A dB
- 定格電圧 (Voltage Rating) : 500V rms
- 耐電圧 (Proof Voltage) : 1500V rms
- 接触抵抗 (Contact Resistance) : 2 mΩ max
- 絶縁抵抗 (Insulation Resistance) : ≥ 5000MΩ
- 勤合保証回数 (Connector Life) : 500 times min

No	DESCRIPTION	MATERIAL	FINISH
3	Contact	BeCu	NICKEL
2	Dielectric	PTFE	NONE
1	Body	BRASS	NICKEL

TOLERANCE			Unit	日本エレパーツ株式会社 NIHON ELEPARTS Co.,LTD	
DECIMALS	.XX ±0.10	.X ±0.15			
DIAMETER	.X ±0.10				
Approved	Checked	Drawn	mm	NAME	REV
			A4	M	MCX-RS-05C
					1