

4

3

2

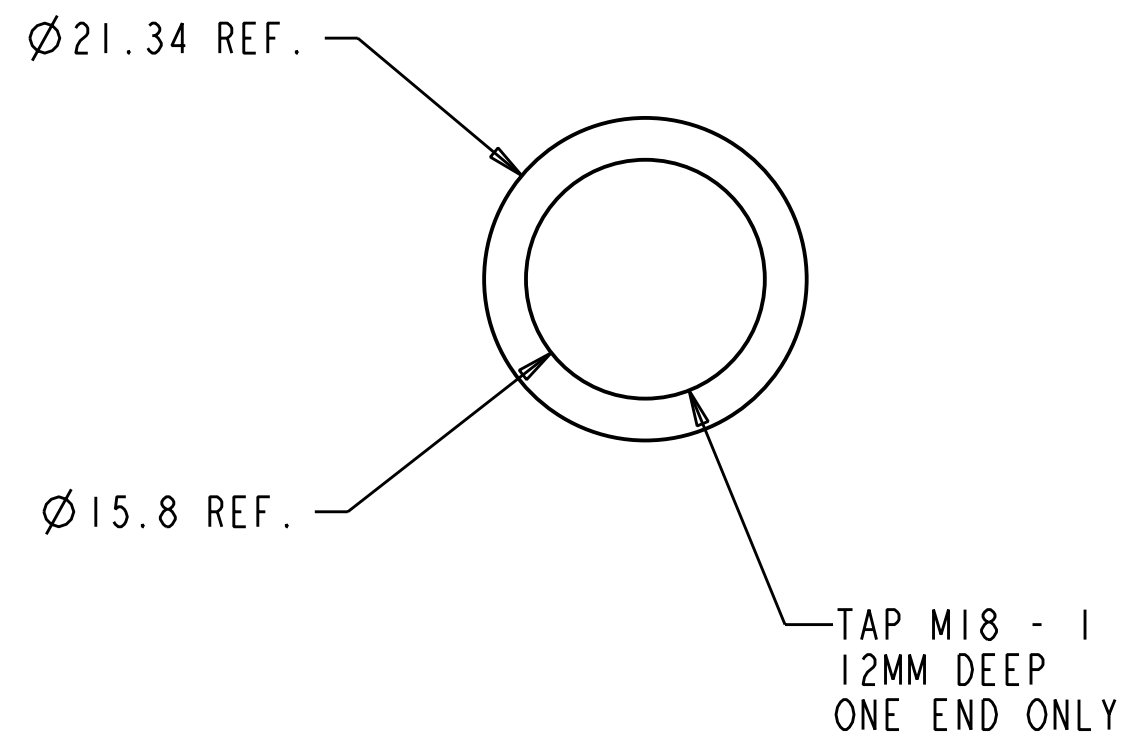
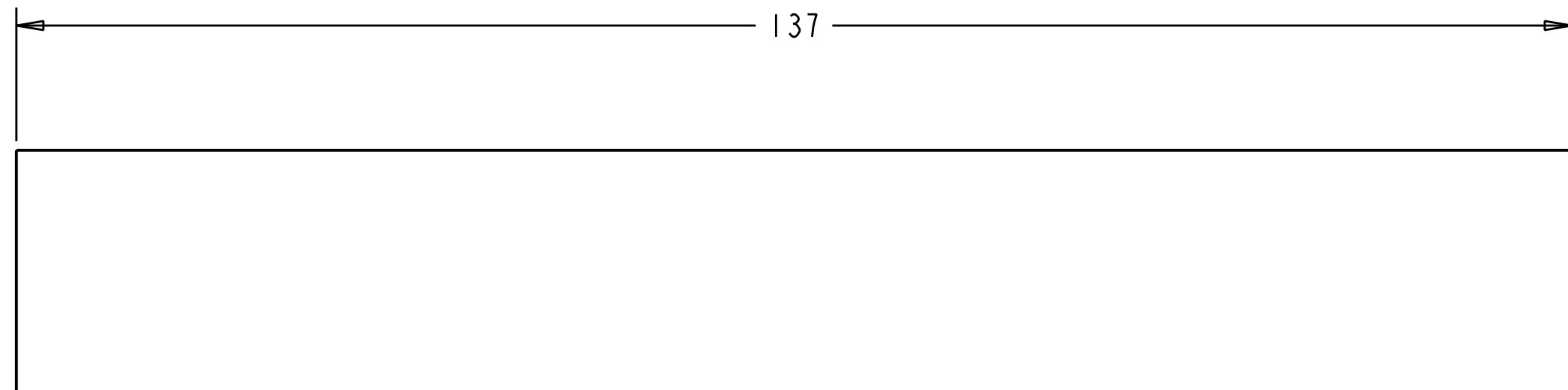
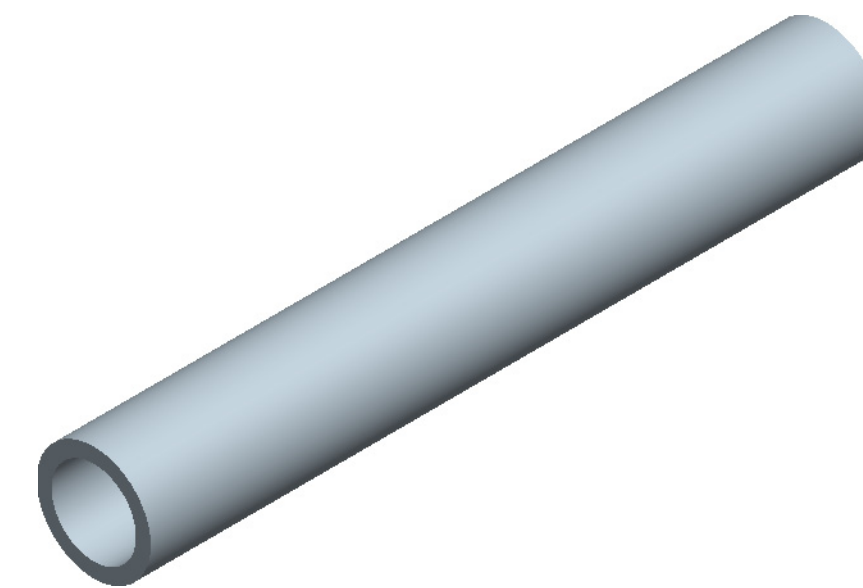
1

THIS DOCUMENT AND THE INFORMATION CONTAINED HEREIN IS CONFIDENTIAL AND IS NOT TO BE REPRODUCED, USED OR DISCLOSED IN WHOLE OR IN PART WITHOUT THE EXPRESS WRITTEN PERMISSION OF BTI SYSTEMS INC.

| REVISIONS | | | | |
|-----------|-----|-----------------|--------------|----------|
| ZONE | REV | DESCRIPTION | DATE (D-M-Y) | APPROVED |
| | 02 | INITIAL RELEASE | 21 JAN 15 | M G |

NOTES:

1. SUPPLIER SHALL CERTIFY THAT THE PRODUCT IS IN COMPLIANCE WITH "DIRECTIVE 2002/95/EC OF THE EUROPEAN PARLIAMENT" PERTAINING TO THE RESTRICTION OF IDENTIFIED HAZARDOUS SUBSTANCES.
2. APPLICABLE STANDARDS
 - A. ASME Y14.100-2000 (ENGINEERING DRAWING PRACTICES)
 - B. ASME-Y14.5M (1994)(DIMENSIONING AND TOLERANCING)
3. MATERIAL 6061-T6 SEAMLESS 1/2" PIPE EXTRUDED.
4. REMOVE ALL BURRS.



| | | | | | | | |
|----------------------------|--|---------------------------|--|-------------------------|-----------|----------------|--|
| THIRD ANGLE PROJECTION | | | | | | | |
| PMIC | | | | 3000 ALUMINUM MAST PIPE | | | |
| GEN. BY B DOLAN | | DATE (D-M-Y) 21-Jan-15 | | | | | |
| REVIEWED BY M GRINSTEAD | | | | | | | |
| PROJECT | | | | SIZE | CAGE CODE | DRAWING NUMBER | |
| 3000 | | | | C | | 29-0092-0 | |
| NEXT ASSEMBLY | | SCALE | | UNIT WT | | SHEET 1 OF 1 | |
| | | NTS | | | | | |

4

3

2

1