

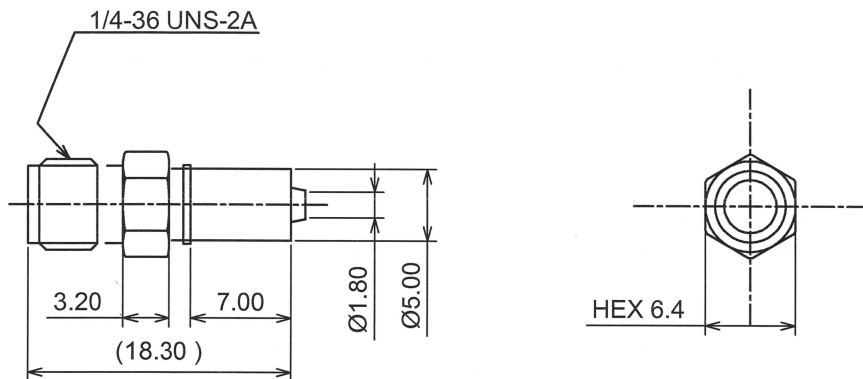
RoHS10 Support

REACH Support

CFSI Support

IP66 Waterproof after mating (Requires waterproof tube)

○形状 (SHAPE)



○規格 (STANDARD)  
MIL-C-39012

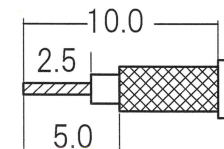
○仕様 (SPECIFICATION)

特性インピーダンス (Impedance) : 50Ω  
 定格周波数 (Working Frequency Range) : DC~6GHz  
 電圧定在波比 (VSWR) : ≤1.40 max at 6GHz  
 挿入損失 (Insertion Loss) : 0.04 dB max × √f GHz (f:Frequency)  
 定格電圧 (Voltage Rating) : 335 Vrms max  
 耐電圧 (Proof Voltage) : 700 Vrms max  
 勤合保証回数 (Connector Life) : 500 times min  
 使用温度範囲 (Temperature range) : -65°C~165°C



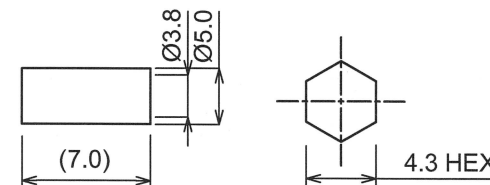
○加工寸法 (ASSEMBLY)

RECOMMENDED CABLE STRIPPING DIMS



SOLDER CONTACT TO CABLE CENTER CONDUCTOR

RECOMMENDED CLIPPING TOOL SIZE



RECOMMENDED CRIMP HEIGHT 4.35±0.15

The tolerance in this area is ±0.10

4	Ferrule	BRASS	NICKEL
3	Contact	BeCu	GOLD
2	Dielectric	PTFE	NONE
1	Body	BRASS	NICKEL
No	DESCRIPTION	MATERIAL	FINISH

TOLERANCE DECIMALS .XX ±0.08 .X ±0.13 DIAMETER .X ±0.03				日本エレパーツ株式会社 NIHON ELEPARTS Co.,LTD	
Approved	Checked	Drawn			
 '22.02.01 山崎	 '22.02.01 大江	 '22.02.01 大江	A4	NAME SMA-RS-1.5D	REV 2