

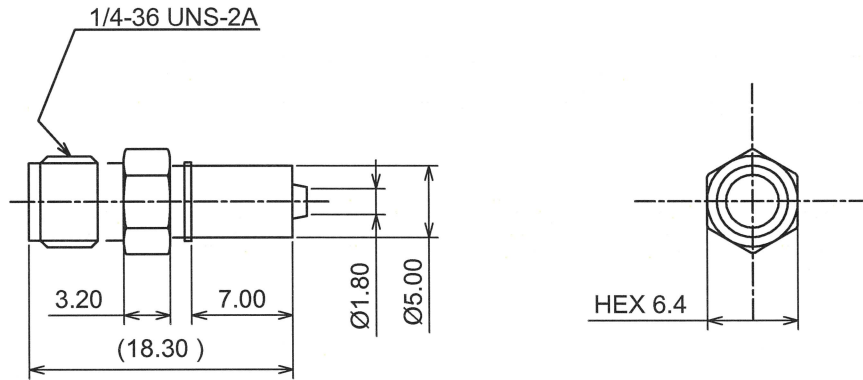
RoHS10 Support

REACH Support

CFSI Support

IP66 Waterproof after mating (Requires waterproof tube)

○形状 (SHAPE)



○規格 (STANDARD)
MIL-C-39012

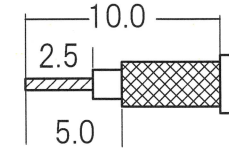
○仕様 (SPECIFICATION)

- 特性インピーダンス (Impedance): 50Ω
- 定格周波数 (Working Frequency Range): DC~6GHz
- 電圧定在波比 (VSWR): ≤1.40 max at 6GHz
- 挿入損失 (Insertion Loss): 0.04 dB max × √f GHz (f:Frequency)
- 定格電圧 (Voltage Rating): 335 Vrms max
- 耐電圧 (Proof Voltage): 700 Vrms max
- 勘合保証回数 (Connector Life): 500 times min
- 使用温度範囲 (Temperature range): -65°C~165°C



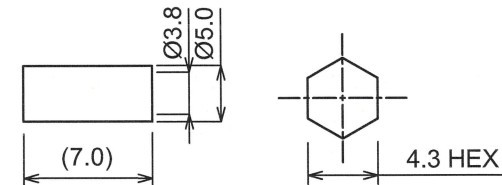
○加工寸法 (ASSEMBLY)

RECOMMENDED CABLE STRIPPING DIMS



SOLDER CONTACT TO CABLE CENTER CONDUCTOR

RECOMMENDED CLIPPING TOOL SIZE



RECOMMENDED CRIMP HEIGHT 4.35±0.15

The tolerance in this area is ± 0.10

| TOLERANCE | | | Unit |
|--------------------------|--------------------------|--------------------------|------|
| DECIMALS | .XX ±0.08 | .X ±0.13 | |
| DIAMETER | .X ±0.03 | | A4 |
| Approved | Checked | Drawn | |
| エレパーツ '22.02.01 山崎 | エレパーツ '22.02.01 大江 | エレパーツ '22.02.01 大江 | mm |

日本エレパーツ株式会社
NIHON ELEPARTS Co.,LTD

| No | DESCRIPTION | MATERIAL | FINISH |
|----|-------------|----------|--------|
| 4 | Ferrule | BRASS | NICKEL |
| 3 | Contact | BeCu | GOLD |
| 2 | Dielectric | PTFE | NONE |
| 1 | Body | BRASS | NICKEL |

N
A
M
E

SMA-RS-RG174U

REV

2