

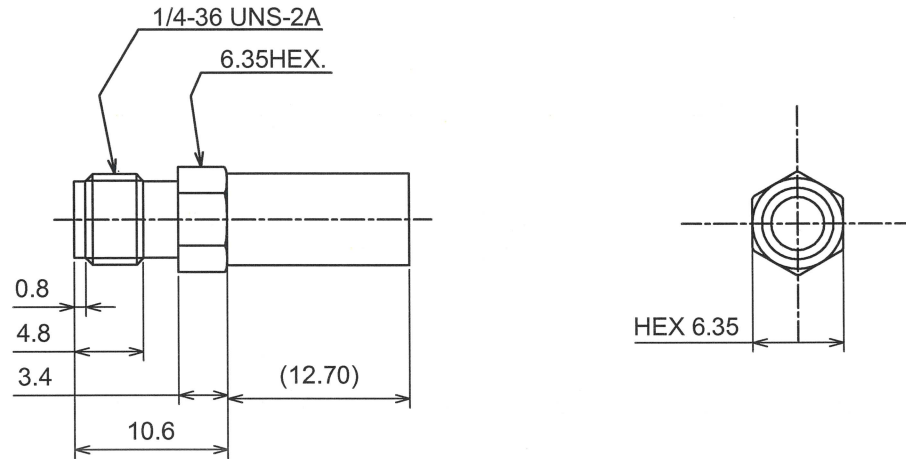
RoHS10 Support

REACH Support

CFSI Support

IP66 Waterproof after mating (Requires waterproof tube)

○形状 (SHAPE)



○規格 (STANDARD)
MIL-C-39012

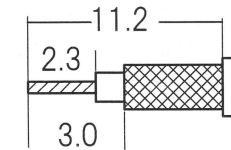
○仕様 (SPECIFICATION)

特性インピーダンス (Impedance): 50 Ω
 定格周波数 (Working Frequency Range): DC~6GHz
 電圧定在波比 (VSWR): ≤1.35 max at 6GHz
 挿入損失 (Insertion Loss): 0.04 dB max × √f GHz (f:Frequency)
 定格電圧 (Voltage Rating): 335 Vrms max
 耐電圧 (Proof Voltage): 700 Vrms max
 勤合保証回数 (Connector Life): 500 times min
 使用温度範囲 (Temperature range): -65°C~165°C



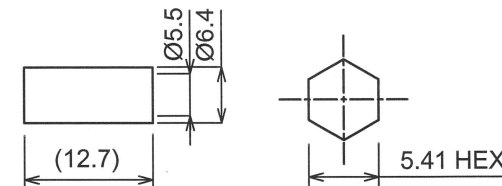
○加工寸法 (ASSEMBLY)

RECOMMENDED CABLE STRIPPING DIMS



SOLDER CONTACT TO CABLE CENTER CONDUCTOR

RECOMMENDED CLIPPING TOOL SIZE



RECOMMENDED CRIMP HEIGHT 5.55±0.2

No	DESCRIPTION	MATERIAL	FINISH
4	Ferrule	BRASS	NICKEL
3	Contact	BeCu	GOLD
2	Dielectric	PTFE	NONE
1	Body	BRASS	NICKEL

TOLERANCE			Unit	NAME	REV
DECIMALS	.XX ±0.08	.X ±0.13			
Approved	Checked	Drawn	mm	日本エレパーツ株式会社 NIHON ELEPARTS Co.,LTD	SMA-RS-RG58AU
山崎	大江	大江	A4		